

# **Newark Liberty International Airport – EWR Vision Plan**

---

October 17, 2024

# EWR Today

2023

PAX	49.1	MAP
International	13.8	28%
Domestic	35.3	72%
Origin / Destination	38.3	78%
Connecting	10.8	22%

## AIRPORT INFRASTRUCTURE



3  
RUNWAYS



3  
TERMINALS



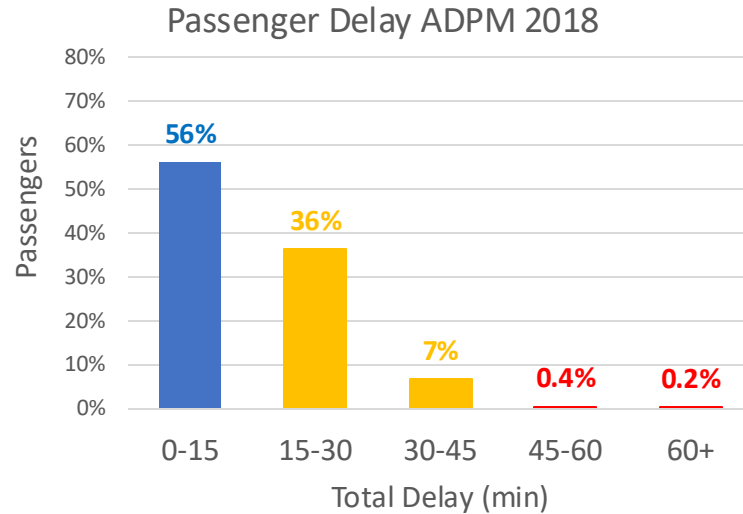
110  
GATES<sup>1</sup>

- Buildings
- Cargo
- MRO (Aircraft maintenance)
- Fuel Storage
- Airport Support
- General Aviation
- Terminal Apron
- Landside Area
- Landside Surface Parking
- AirTrain

Confidential and Deliberative



# Existing Challenges



## Airside – one of the most delayed airports in the country

Cascading delays result from demand exceeding current runway / airspace capacity and undersized infrastructure delaying access and exit to gates



## Landside – congested and difficult to navigate

Insufficient curb frontage & For Hire Vehicles (Uber and Lyft) facilities and complex wayfinding with frequent vehicle weaving and short distances to decision points. Lack of local road, cycle & pedestrian connections.



## Terminal – aging and undersized facilities

Lack of space, low ceiling heights, spilt operations and aging systems result in poor customer experience and operational inefficiencies

**Existing Terminal B opened over 50 years ago in 1973**

# Vision Plan Objectives

- Create a memorable, locally driven, **World Class Customer Experience**
- Provide capacity for **Long-Term Passenger Demand**
- **Reduce delays** and increase operational efficiency & resilience
- Make a feasible, phaseable plan to **Minimize Impact on Airport Operations & Customer Experience**
- Enable **access, business and employment opportunities** for the local community
- **Embed Sustainability** in every element, to establish EWR as a leader in sustainability

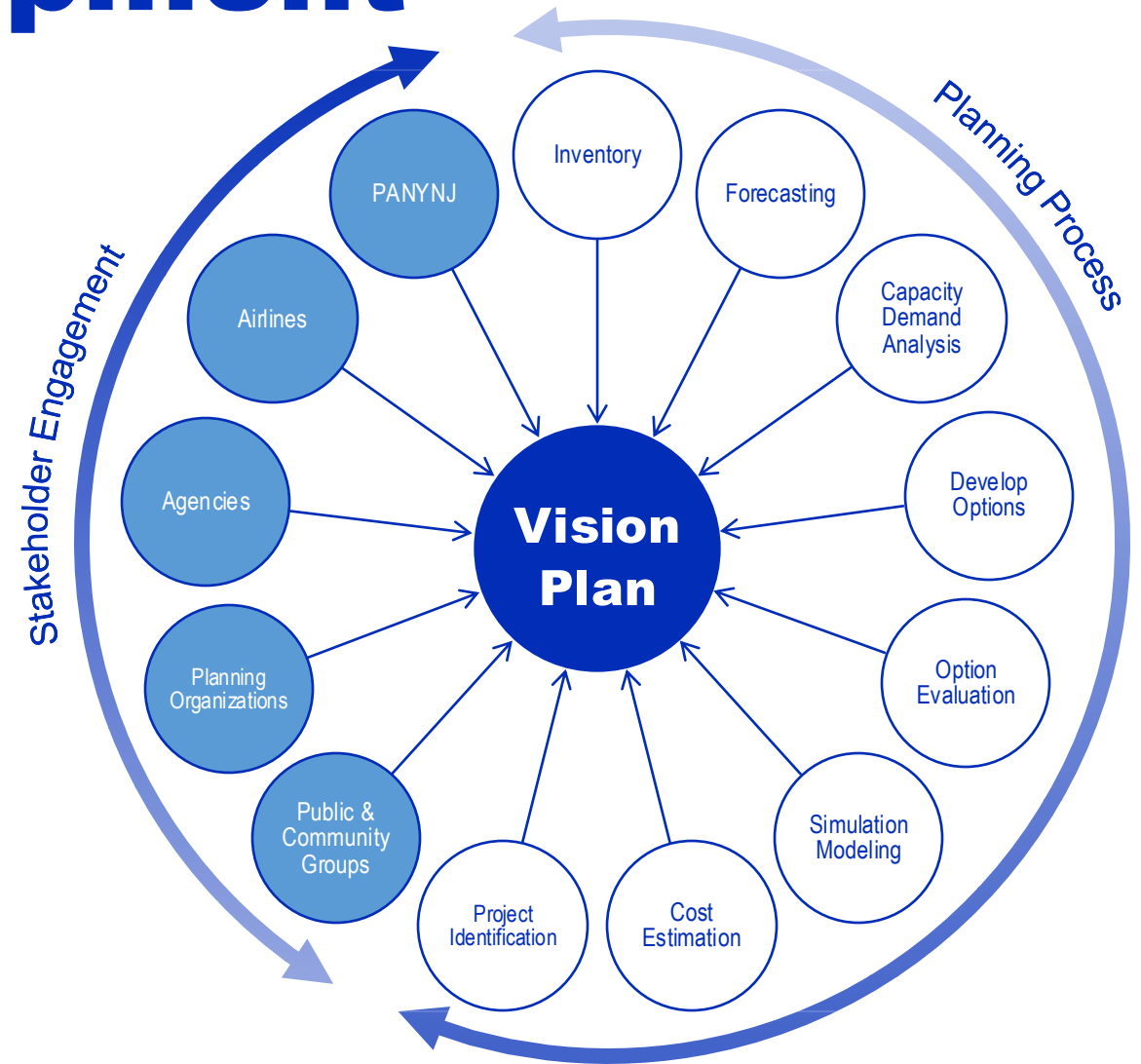
# Vision Plan Development

**Planning Process** – the Vision Plan was developed through an iterative process of demand analysis, option development / evaluation and stakeholder engagement.

**Stakeholder Engagement** – the Vision Plan team held more than **200** meetings to collect input from internal/PANYNJ stakeholders and external stakeholders including on-airport tenants and the public.

Frequent feedback included:

- Operational efficiency & modernization of facilities
- World-class passenger experience
- Sustainability & resilience
- Flexibility for a changing market



# Community Engagement

Three rounds of public sessions have been held through the project:

- Round 1 Listening: Jan 31-Feb 2023
- Round 2 Engagement: May 16-18 2023
- Round 3 Engagement: Sept 25-27 2023

All rounds included in-person and virtual meetings in Newark and Elizabeth

Local community groups and leaders participated, such as the Weequahic Park Association, Newark Alliance, Ironbound Community Corporation, Groundwork Elizabeth



Jan 2023, Newark South Ward



May 2023, Elizabeth



# Community Feedback



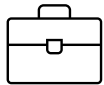
More local art, culture and “sense of place” from Newark & Elizabeth



Business opportunities for local businesses and MWBEs & ACDBEs firms



Improved terminal design and amenities



Employment opportunities for local communities



Improved airport access for local residents & employees

Terminal A feedback has been largely positive, and Terminal B development will aim to continue and improve upon that success



Mural in Terminal A



Terminal A Departures Hall

# Vision Plan Recommendations

## Near Term Recommendations

- Complete ongoing AirTrain & Station Access Programs
- Terminal A Capacity Enhancements
- Terminal B Replacement
  - CHRP Replacement
  - Landside / Airside facilities in support of New Terminal B
- Enhancements of Terminal C Assets

## Long Term Recommendations

- Completion of Central Terminal Area Roadways and Utilities
- Expansion of parking facilities
- Additional airside facilities
- Terminal C Replacement



# A New Terminal B



9 All renderings are illustrative in nature and  
subject to change during future stages of  
development

Confidential and Deliberative



# New Terminal B Apron



10 All renderings are illustrative in nature and  
subject to change during future stages of  
development

Confidential and Deliberative



# Near Term Layout



11 All renderings are illustrative in nature and  
subject to change during future stages of  
development

Confidential and Deliberative



# Long Term Layout



12 All renderings are illustrative in nature and  
subject to change during future stages of  
development

Confidential and Deliberative

**Thank You!**