

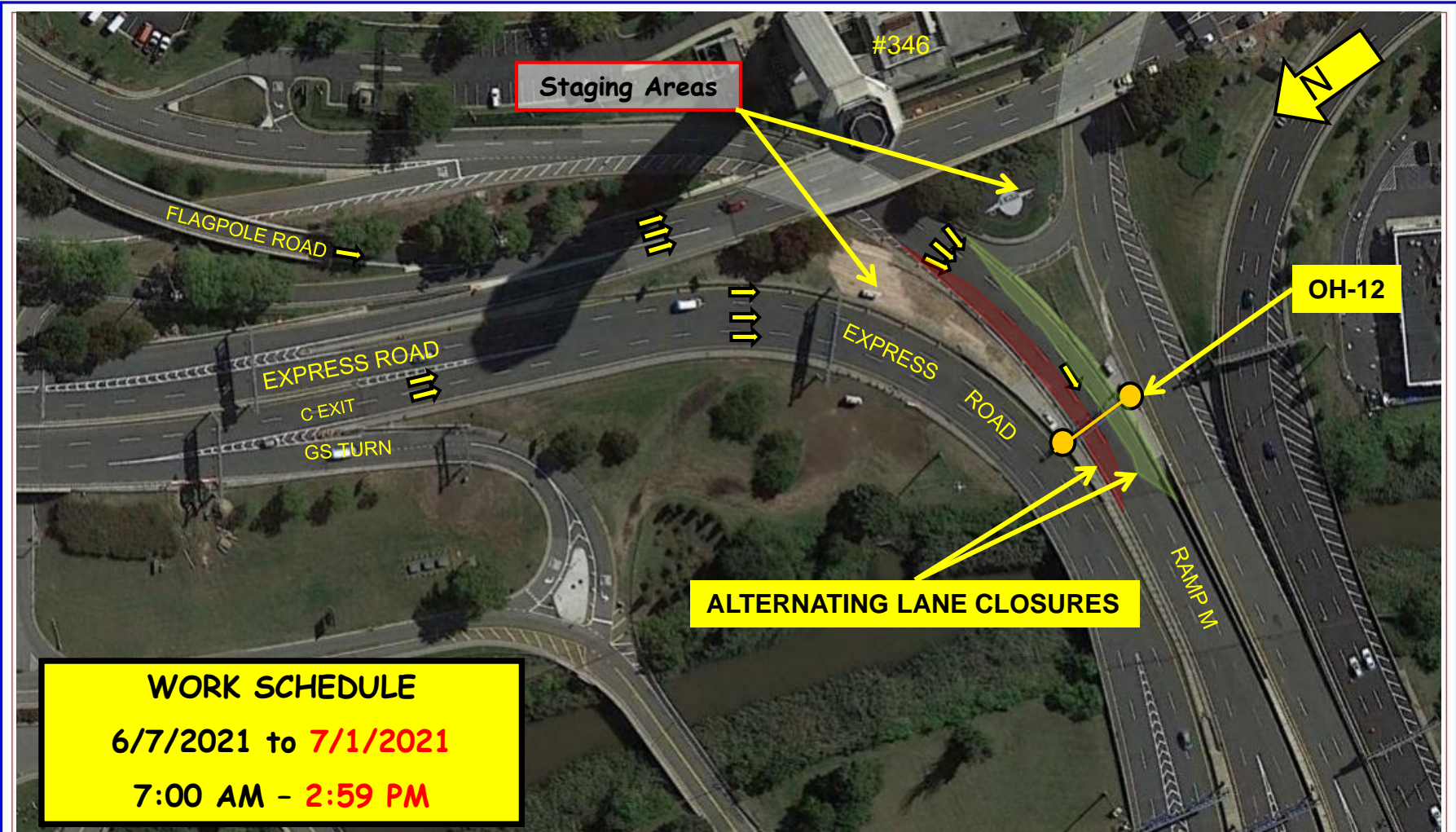


# FACILITY CONSTRUCTION BULLETIN No. 3960 ADDENDUM C1

Issued  
6/9/2021

Prepared by the Port Authority Construction Management Division

Prepared By  
J. HERMAN/JPR



**WORK SCHEDULE**  
**6/7/2021 to 7/1/2021**  
**7:00 AM - 2:59 PM**

NEWARK LIBERTY INTERNATIONAL AIRPORT	6/9/2021	EWR 154.395	OVERHEAD SIGN STRUCTURE OH-12 ON-SITE SIGN PANEL AND ELEC. DELIVERY AND ASSEMBLY OPERATION
--------------------------------------	----------	-------------	--

Beginning on or about Monday, May 7<sup>th</sup>, 2021 through **Thursday, July 1<sup>st</sup>, 2021** from 7:00 AM to **2:59 PM**, contractor Conti Construction/S&J Electric/J.F. Creamer sub will perform sign panel and electrical component assembly work at **OH-12**, utilizing alternating right and left lane closure on Ramp M. No crane will be used. A bucket/boom truck with a maximum extended height/length of 50 feet, not to exceed the height of the upper elevation of the sign structure will be utilized. Advanced warning signage and PA Police will be onsite.