

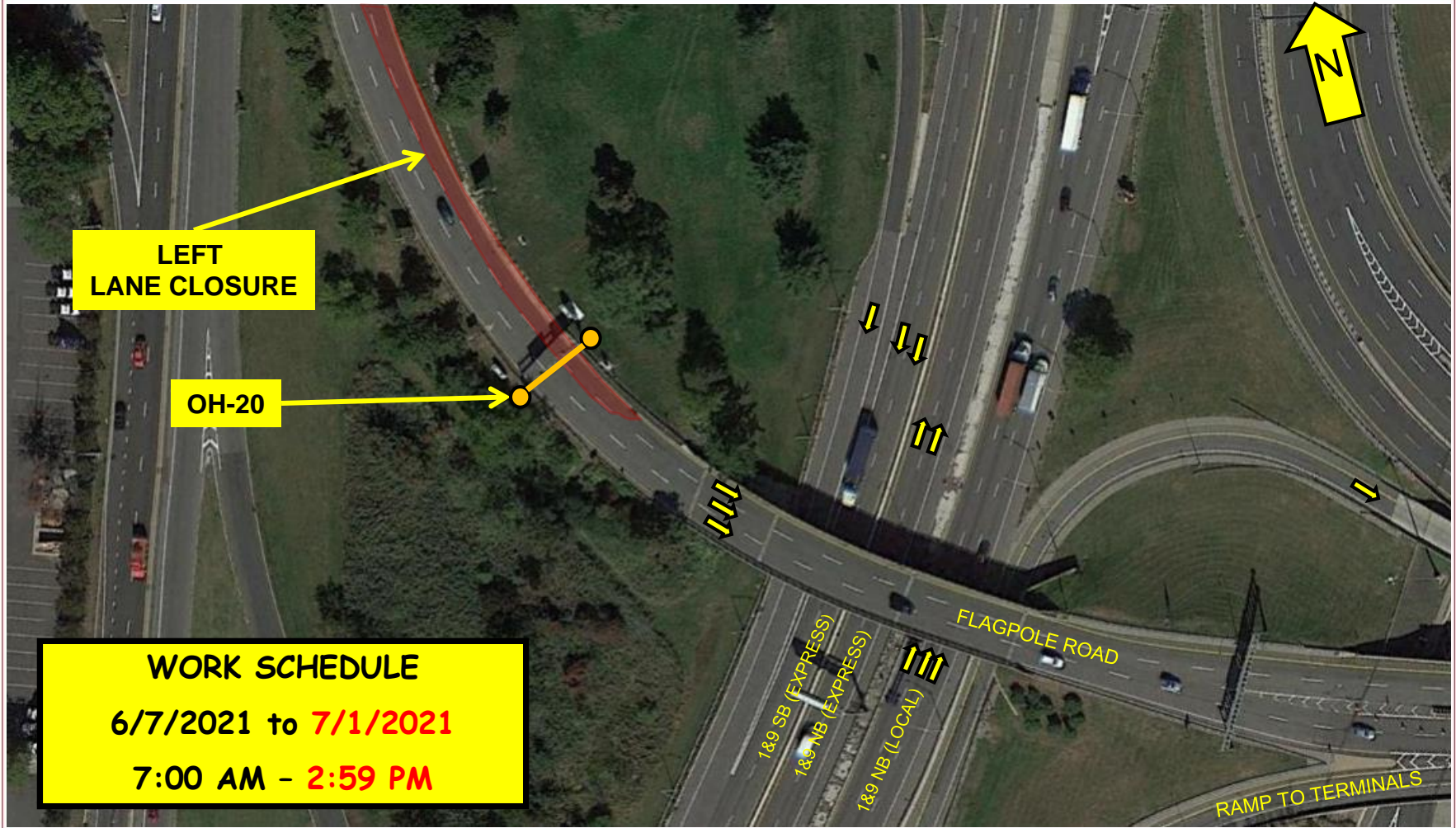


FACILITY CONSTRUCTION BULLETIN No. 3960 ADDENDUM B1

Issued 6/1/2021

Prepared by the Port Authority Construction Management Division

Prepared By J. HERMAN/JPR



WORK SCHEDULE
6/7/2021 to 7/1/2021
7:00 AM - 2:59 PM

NEWARK LIBERTY INTERNATIONAL AIRPORT	6/1/2021	EWR 154.395	OH-20 SIGN PANEL AND ELEC. COMPONENTS ON-SITE UNLOADING AND ASSEMBLY OPERATION
--------------------------------------	----------	-------------	--

Beginning on or about Monday, May 7th, 2021 through **Thursday, July 1st, 2021** from 7:00 AM to **2:59 PM**, contractor Conti Construction/S&J Electric/J.F. Creamer sub will perform sign panel and electrical component assembly work at **OH-20**, utilizing a left lane closure on Flagpole Road. No crane will be used. A bucket/boom truck with a maximum extended height/length of 50 feet, not to exceed the height of the upper elevation of the sign structure will be utilized. Advanced warning signage and PA Police will be onsite.