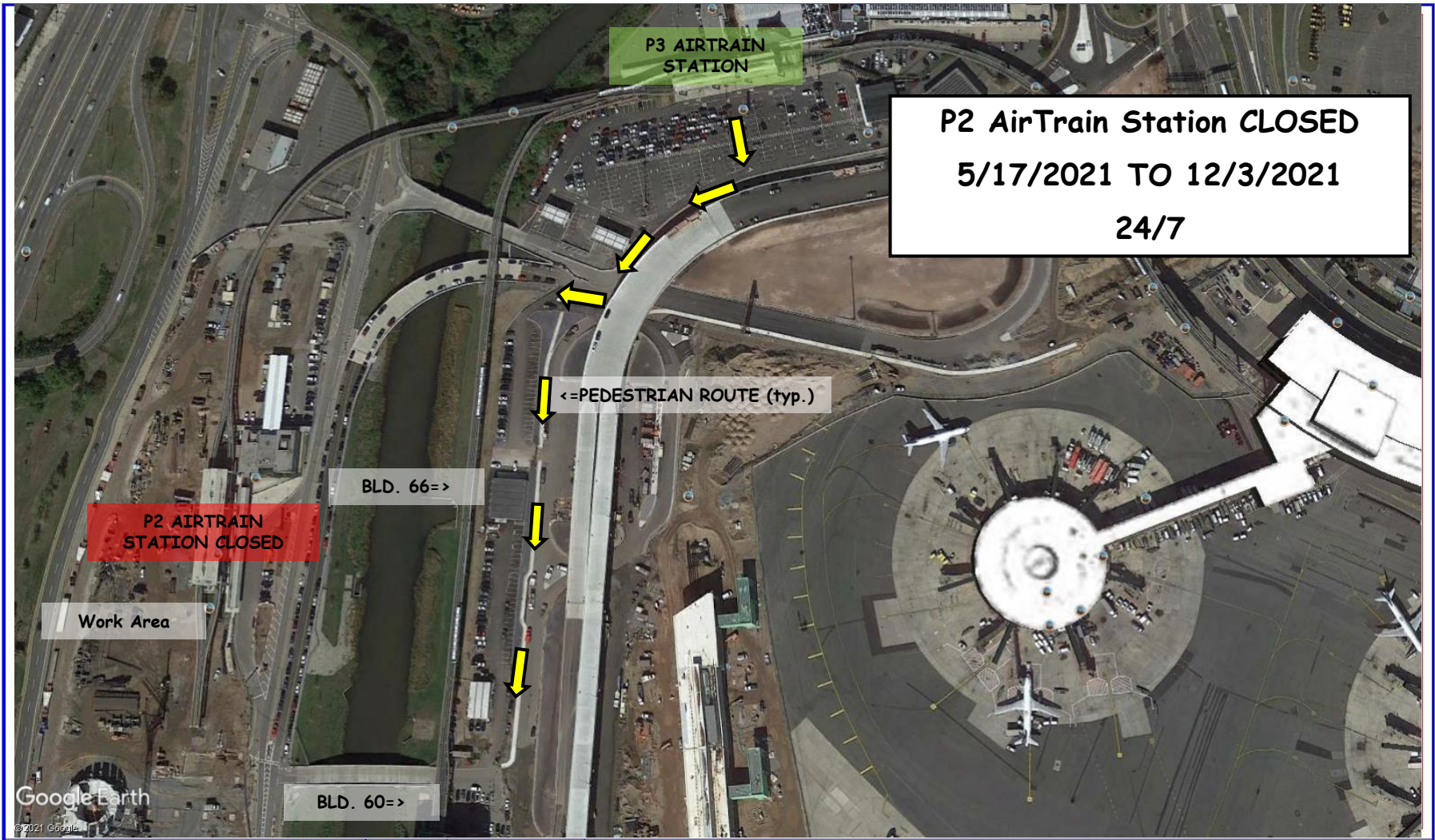




# FACILITY CONSTRUCTION BULLETIN No. 3954

Prepared by the Port Authority Construction Management Division

Issued  
5/6/2021  
Prepared By  
L. ANTICO/JPR



NEWARK LIBERTY INTERNATIONAL AIRPORT	5/6/2021	--	P2 AIRTRAIN STATION CLOSURE
--------------------------------------	----------	----	-----------------------------

Beginning on Monday, May 17<sup>th</sup>, 2021 through Friday December 3<sup>rd</sup>, 2021 24/7. Due to the ongoing construction of the CONRAC parking garage, P2 AirTrain Station will be closed. AirTrain will continue to operate at a reduced level of service during the aforementioned time period. The Port Authority will provide supplemental buses during peak periods to assist with capacity. In addition, a pedestrian route is available for employees utilizing AirTrain to access Buildings 60 and 66 from the P3 AirTrain Station.