

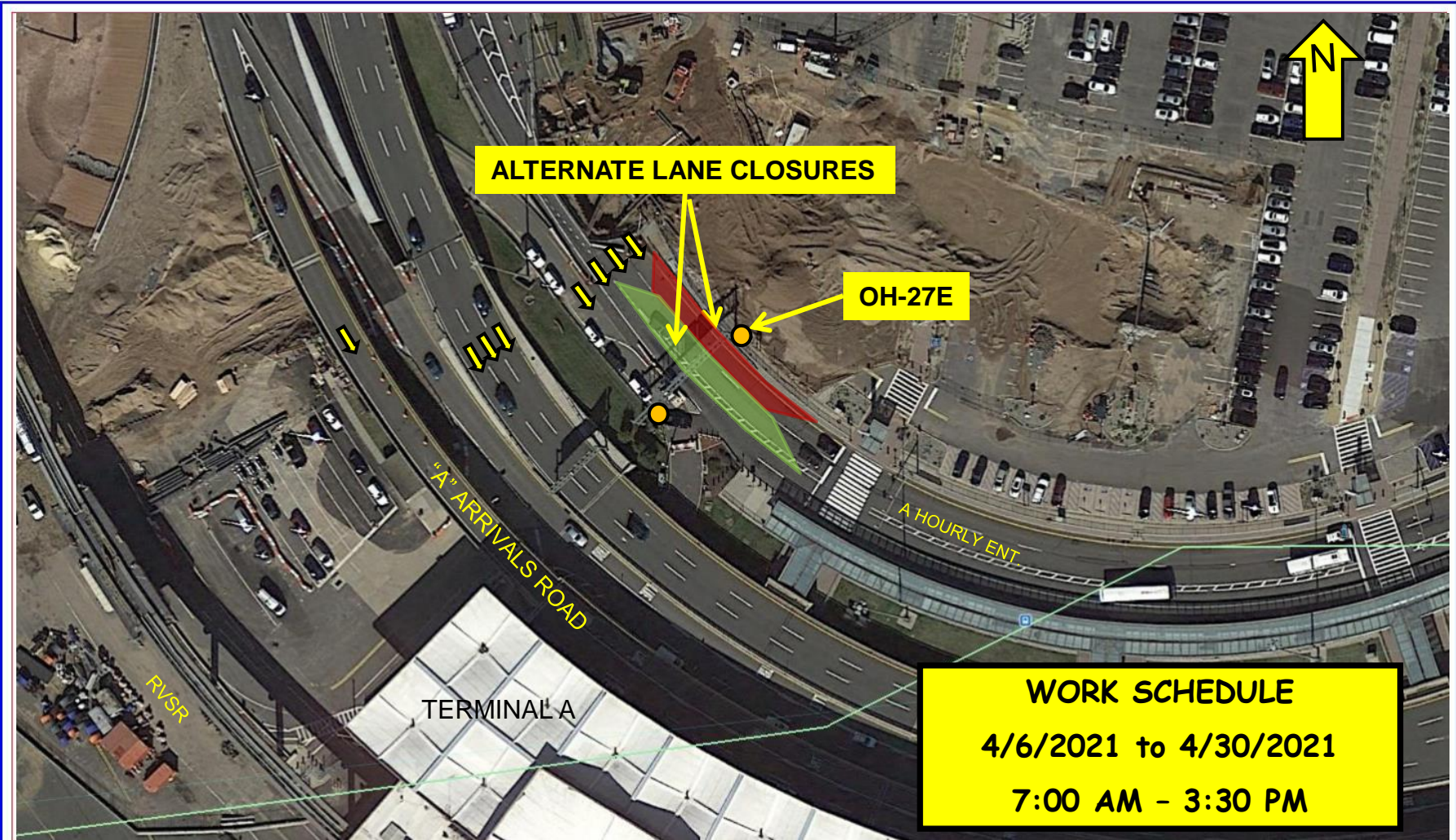


FACILITY CONSTRUCTION BULLETIN No. 3948 ADDENDUM D

Issued
4/1/2021

Prepared by the Port Authority Construction Management Division

Prepared By
J. HERMAN/JPR



NEWARK LIBERTY INTERNATIONAL AIRPORT	4/1/2021	EWR 154.395	OVERHEAD SIGN STRUCTURE OH-27E ON-SITE UNLOADING AND ASSEMBLY OPERATION
--------------------------------------	----------	-------------	---

Beginning on or about Monday, April 6th, 2021 through Friday, April 30th, 2021 from 7:00 AM to 3:30 PM contractor Conti Construction/ S&J Electric sub will perform overhead lighting and antenna work at OH-27E, utilizing alternate right and left lane closures on "A" Hourly parking entrance ramp. No crane will be used. A bucket/boom truck with a maximum extended height/length of 50 feet, not exceeding the upper elevation of the sign will be utilized. Advanced warning signage and the PA Police will be onsite.