

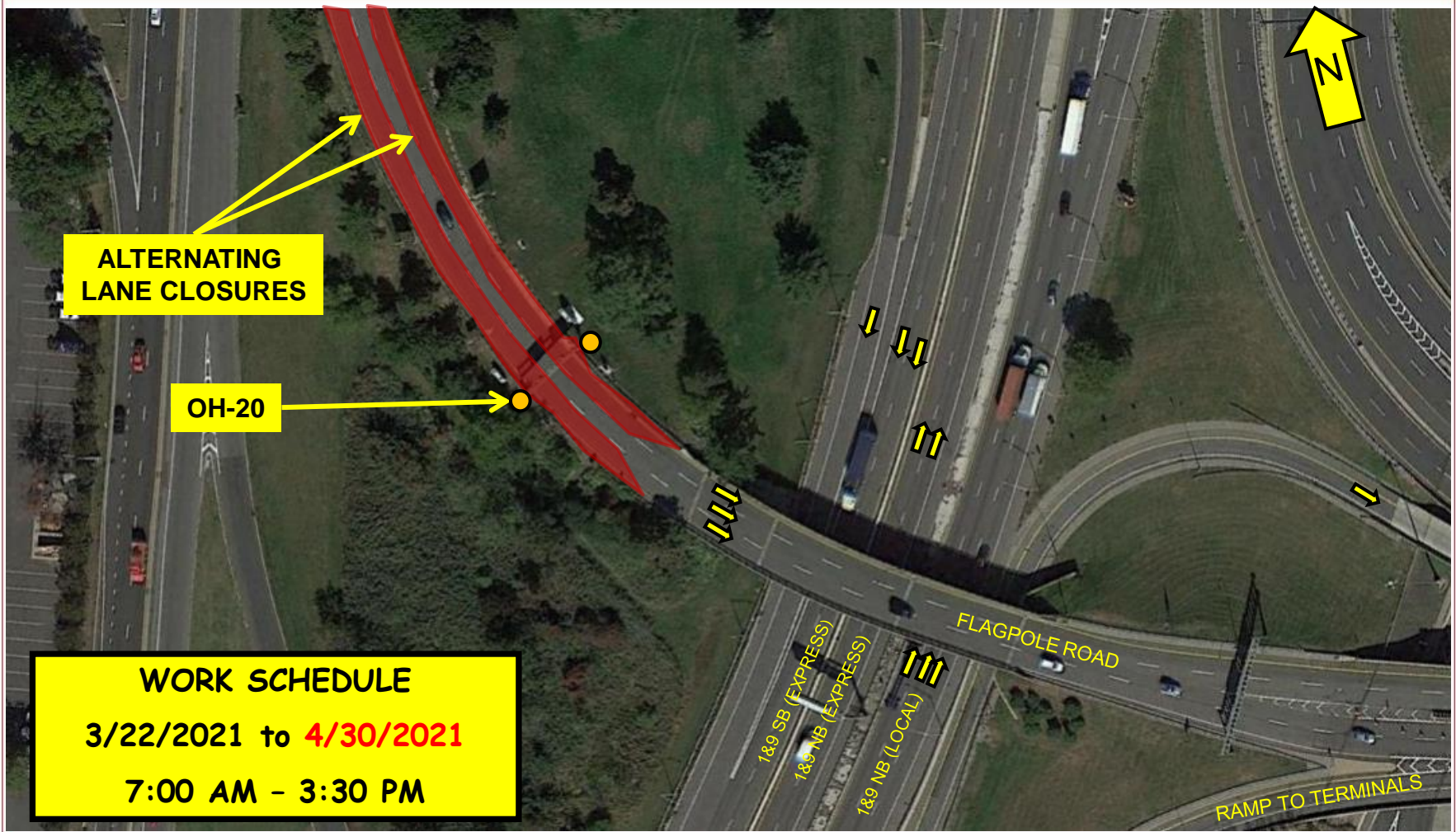


FACILITY CONSTRUCTION BULLETIN No. 3948 ADDENDUM C1

Issued 3/22/2021

Prepared by the Port Authority Construction Management Division

Prepared By J. HERMAN/JPR



NEWARK LIBERTY INTERNATIONAL AIRPORT	3/22/2021	EWR 154.395	OVERHEAD SIGN STRUCTURE OH-20 ON-SITE DELIVERY AND ASSEMBLY OPERATION
--------------------------------------	-----------	-------------	---

Beginning on or about Monday, March 22nd, 2021 through **Friday, April 30th, 2021** from 7:00 AM to 3:30 PM contractor Conti Construction/J.F. Creamer sub will erect the end frame towers at OH-20, utilizing alternating right and left lane closures on Flagpole Road. A crane will be used to unload, stage and erect the vertical end frame towers with a maximum extended length/height of 110 feet. Airside Operations will be notified upon the crane booming up and booming down. Advanced warning signage and PA Police will be onsite.