

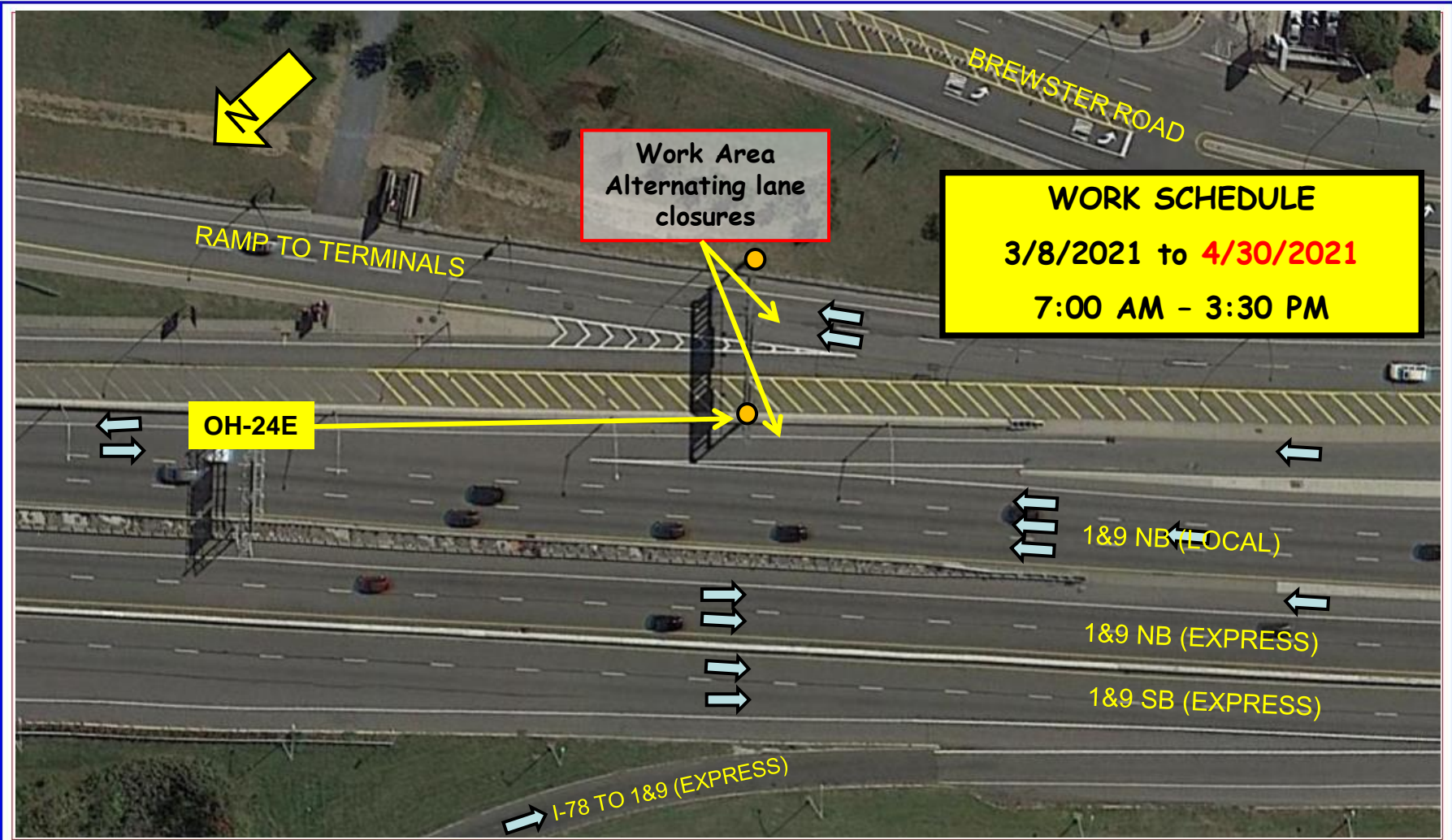


FACILITY CONSTRUCTION BULLETIN No. 3940 ADDENDUM K1

Issued 3/22/2021

Prepared by the Port Authority Construction Management Division

Prepared By J. HERMAN/JPR



NEWARK LIBERTY INTERNATIONAL AIRPORT	3/22/2021	EWR 154.395	OVERHEAD SIGN STRUCTURE OH-24E ON-SITE DELIVERY AND ASSEMBLY OPERATION
--------------------------------------	-----------	-------------	--

On or about Monday, March 8th, 2021 through **Friday, April 30th, 2021** from 7:00 AM to 3:30 PM contractor Conti Construction/S&J will perform overhead lighting and its antenna work at OH-24E, utilizing alternating left and right lane closures on the TR-2 ramps to Terminals and US 1&9 NB Local Lanes. No crane will be used. A bucket/boom truck with a maximum extended length/height of 50 feet not exceeding the upper elevation of the sign structure will be utilized. Advanced warning signage and PA Police will be on site.