

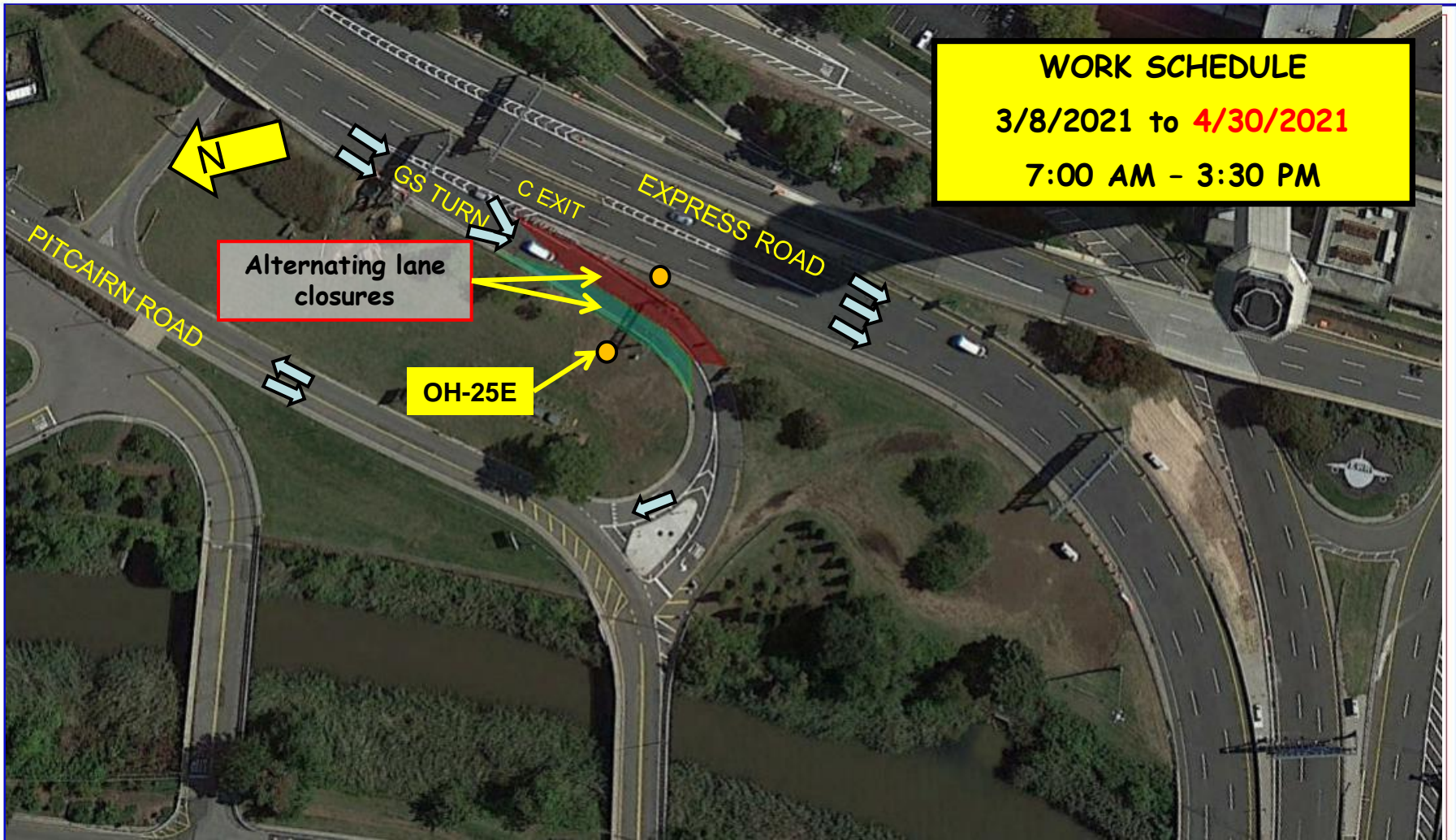


FACILITY CONSTRUCTION BULLETIN No. 3940 ADDENDUM I1

Issued
4/5/2021

Prepared by the Port Authority Construction Management Division

Prepared By
J. HERMAN/JPR



NEWARK LIBERTY INTERNATIONAL AIRPORT

4/5/2021

EWR 154.395

OVERHEAD SIGN STRUCTURE OH-25E ON-SITE UNLOADING AND ASSEMBLY OPERATION

On or about Monday, March 8TH, 2021 through **Friday, April 30th, 2021** from 7:00 AM to 3:30 PM contractor Conti Construction/J.F. Creamer sub will offload, stage and erect the end-frame towers at **OH-25E** utilizing alternating right and left lane closures as well as working in the grass median area behind guiderail. No crane will be used. A bucket boom truck with a maximum extended height/length of 50 feet not exceeding the upper elevation of the sign structure will be utilized. Warning signage and PA Police will be on site.