

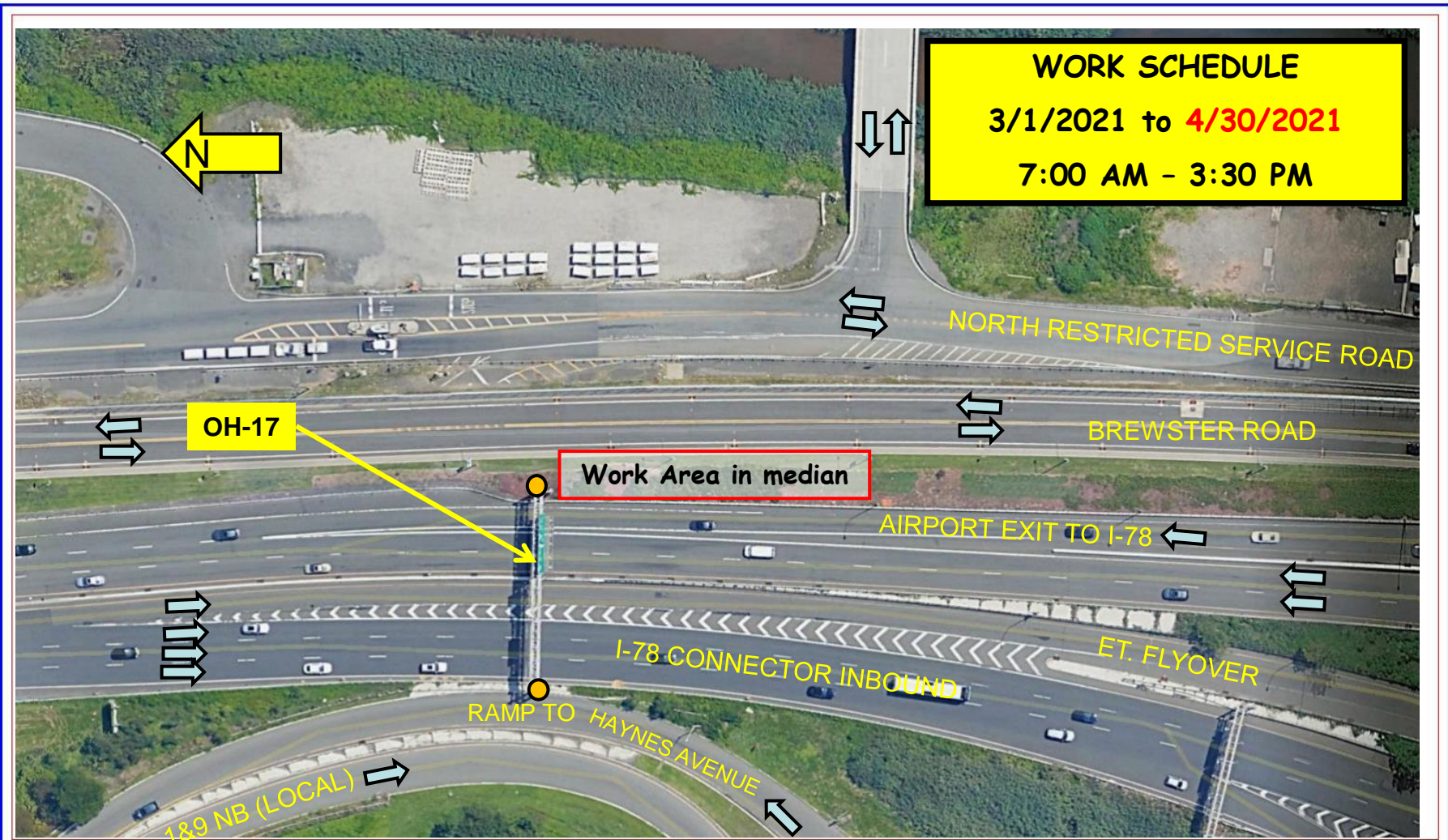


# FACILITY CONSTRUCTION BULLETIN No. 3940 ADDENDUM G2

Issued 3/22/2021

Prepared by the Port Authority Construction Management Division

Prepared By J. HERMAN/JPR



NEWARK LIBERTY INTERNATIONAL AIRPORT	3/3/2021	EWR 154.395	OVERHEAD SIGN STRUCTURE OH-17 ON-SITE DELIVERY AND ASSEMBLY OPERATION
--------------------------------------	----------	-------------	---

On or about Monday, March 1<sup>st</sup>, 2021 through **Friday, April 30<sup>th</sup>, 2021** from 7:00 AM to 3:30 PM contractor Conti Construction/J.F. Creamer sub will offload, continue assembly of **OH-17** working in the grass median area behind guiderail between Brewster Road and Airport Exit to I-78. A crane will be used to unload the materials with a maximum boom height of 110 feet. Airside ops will be notified upon the crane booming up and down. This work has no impact on roadway traffic. No roadway closures are required. All activities will be behind the guide rail in the grass median area. Signs and PA Police will be on site.