

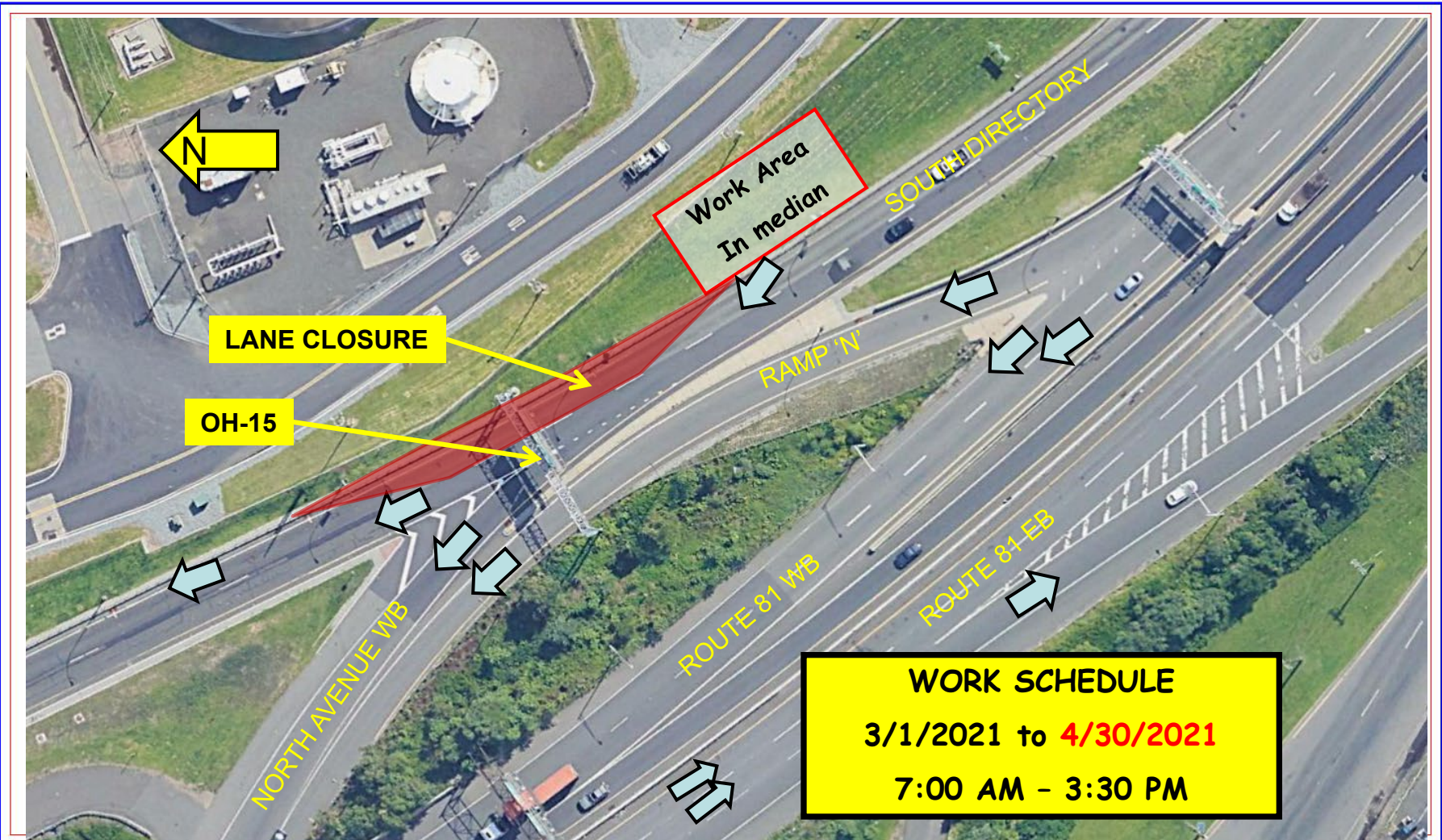


FACILITY CONSTRUCTION BULLETIN No. 3940 ADDENDUM E2

Issued 3/22/2021

Prepared by the Port Authority Construction Management Division

Prepared By J. HERMAN/JPR



NEWARK LIBERTY INTERNATIONAL AIRPORT

3/22/2021

EWR 154.395

OVERHEAD SIGN STRUCTURE OH-15 ON-SITE DELIVERY AND ASSEMBLY OPERATION

On or about Monday, March 1st, 2021 through **Friday, April 30th, 2021** from 7:00 AM to 3:30 PM contractor Conti Construction/J.F. Creamer sub will offload, stage and begin assembly of OH-15 working in the grass median area behind guiderail. A crane will be used for this process. It will not exceed a maximum boom height of 110 feet. A right lane closure will be required on South Directory Road across from Ramp 'N'. All other activities will be behind the guide rail in the grass median area. Advanced warning Signage and PA Police will be on site.