

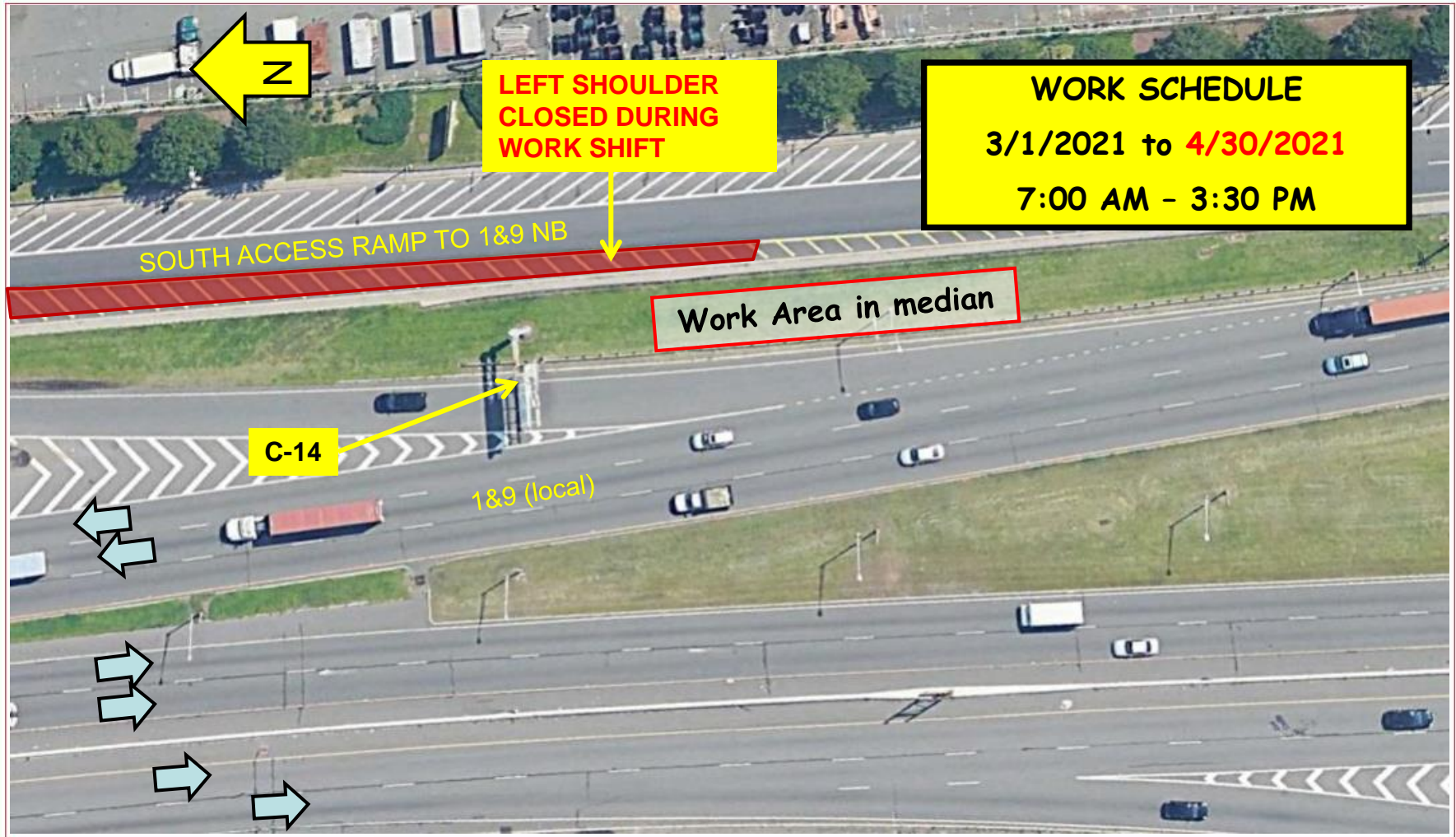


# FACILITY CONSTRUCTION BULLETIN No. 3940 ADDENDUM C2

Issued 3/3/2021

Prepared by the Port Authority Construction Management Division

Prepared By N. ALKHATIB/JPR



NEWARK LIBERTY INTERNATIONAL AIRPORT

3/3/2021

EWR 154.395

OVERHEAD SIGN STRUCTURE C-14 ON-SITE DELIVERY AND ASSEMBLY OPERATION

On or about **Monday, March 1<sup>st</sup>, 2021** through **Friday, April 30<sup>th</sup>, 2021** from 7:00 AM to 3:30 PM contractor Conti Construction/J. Creamer sub will perform demolition of previously installed foundation for C-14 in the grass median area behind guiderail. Equipment in use will not exceed a maximum boom height of 110 feet. All activities will be behind the guide rail in the grass median area. A left shoulder closure will be required. Advanced warning signage will be utilized, and PA Police will be onsite for traffic control and escorting vehicles and equipment in and out of the area.