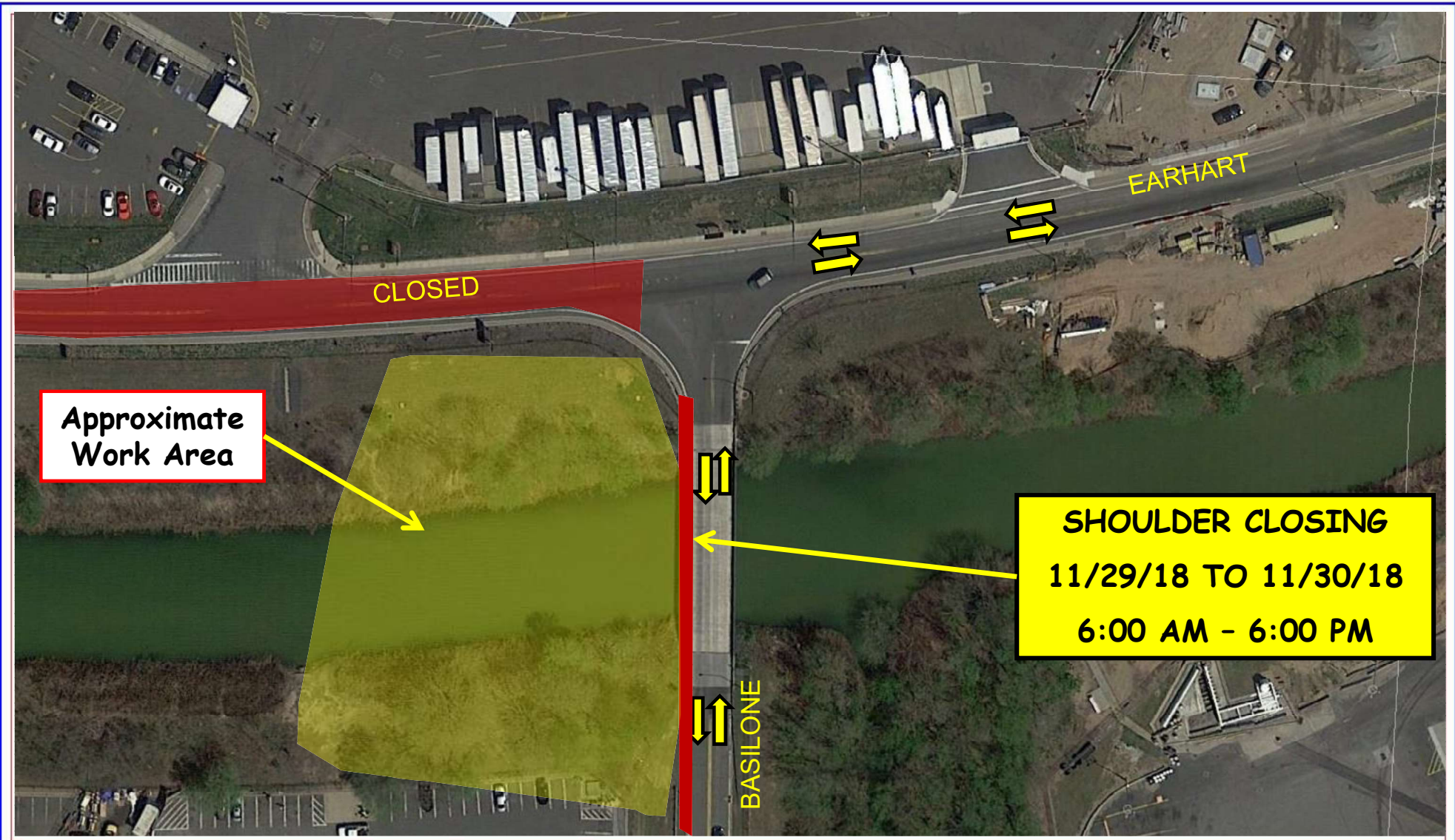




FACILITY CONSTRUCTION BULLETIN No. 3823

Prepared by the Port Authority Construction Management Division

Issued
11/28/18
Prepared By
E. QADI/JPR



NEWARK LIBERTY INTERNATIONAL AIRPORT	11/28/2018	EWR 154.392	BASILONE ROAD NORTH SHOULDER CLOSURE FOR STEEL ERECTION
--------------------------------------	------------	-------------	---

Beginning on Thursday, November 29th, 2018, through Friday November 30th, 2018, contractor JCM will be erecting steel for Bridge N59 which will require the closure of the north shoulder of Basilone Road.